

MASONRY RESTORATION PROJECT

MAPLE POINT MIDDLE SCHOOL

2250 LANGHORNE - YARDLEY ROAD
LANGHORNE, PA.

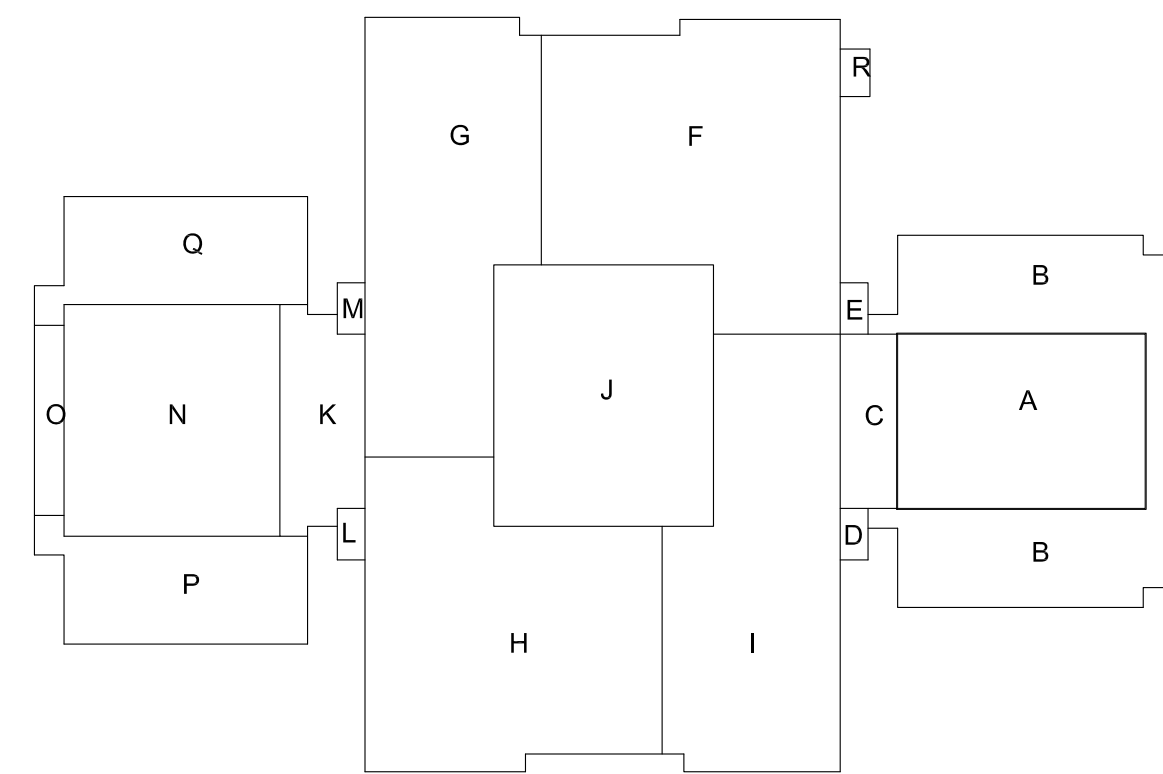


OWNER



NESHAMINY SCHOOL DISTRICT

2001 OLD LINCOLN HIGHWAY
LANGHORNE, PA. 19047



KEY PLAN
NOT TO SCALE



DRAWING SYMBOLS

ELEVATION SYMBOLS	SYMBOLS	DESCRIPTIONS
		EXHAUST VENT
		SLOPE
		EXISTING ROOF DRAIN
		NEW ROOF DRAIN
		NEW ROOF DRAIN LOCATION
		CONDUIT SUPPORT
		DRAWING NOTE
		THERMAL ANOMALY
		DRY PROBE
		WET PROBE
		DETAIL
		PHOTO INDICATOR
		DEFICIENCY INDICATOR
		THERMOGRAM PHOTO
		NOT INCLUDED IN SURVEY
		NOT INCLUDED IN CONTRACT


INDEX OF DRAWINGS

DWG. NO.	DRAWING NAME
T-1	TITLE SHEET
A-1	ELEVATIONS, DETAILS
A-2	REPAIR DETAILS
A-3	REPAIR DETAILS

GENERAL NOTES

- CONTRACTOR SHALL BECOME FAMILIAR WITH AND VERIFY THE CONDITIONS, DIMENSIONS AND LOCATIONS OF ALL EXTERIOR WALLS INCLUDING WINDOWS, DOORS, LIGHT FIXTURES AND OTHER PENETRATIONS BEFORE SUBMITTING A BID OR COMMENCING WORK.
- IT WILL BE THE CONTRACTOR'S RESPONSIBILITY TO ASCERTAIN FROM THE CONSULTANT THE INTERPRETATION AND INTENT OF THE INFORMATION GIVEN IN THE DRAWINGS AND SPECIFICATIONS.
- ONLY ONE DETAIL SYMBOL IS SHOWN FOR EACH TYPE OF EXTERIOR WALL PENETRATION. ALL OTHER SIMILAR PENETRATIONS SHALL BE FLASHED AS REQUIRED BY THAT DETAIL, UNLESS OTHERWISE NOTED.
- FLASH ALL EXTERIOR WALL PENETRATIONS IN ACCORDANCE WITH THE CONTRACT DRAWINGS AND SPECIFICATIONS AND APPROVED SHOP DRAWINGS. THE PROJECT DETAILS SHALL GOVERN THE MATERIAL INSTALLATION UNLESS THE MATERIAL MANUFACTURER REQUIRES A MORE STRINGENT DETAIL FOR PURPOSES OF PROPER MATERIAL PERFORMANCE OR MANUFACTURER'S DETAIL SHALL GOVERN.
- COMPONENTS SHOWN IN SECTIONS AND DETAILS SHALL BE "NEW", UNLESS OTHERWISE NOTED.

REVISIONS	NO.	DATE	BY



3735 GREEN ROAD BEACHWOOD, OH 44122
TEL: 800-852-6013 WWW.WTISERVICES.COM

CLIENT:
NESHAMINY SCHOOL DISTRICT

BUILDING:
MAPLE POINT MIDDLE SCHOOL

LOCATION:
2250 LANGHORNE-YARDLEY ROAD
LANGHORNE, PA

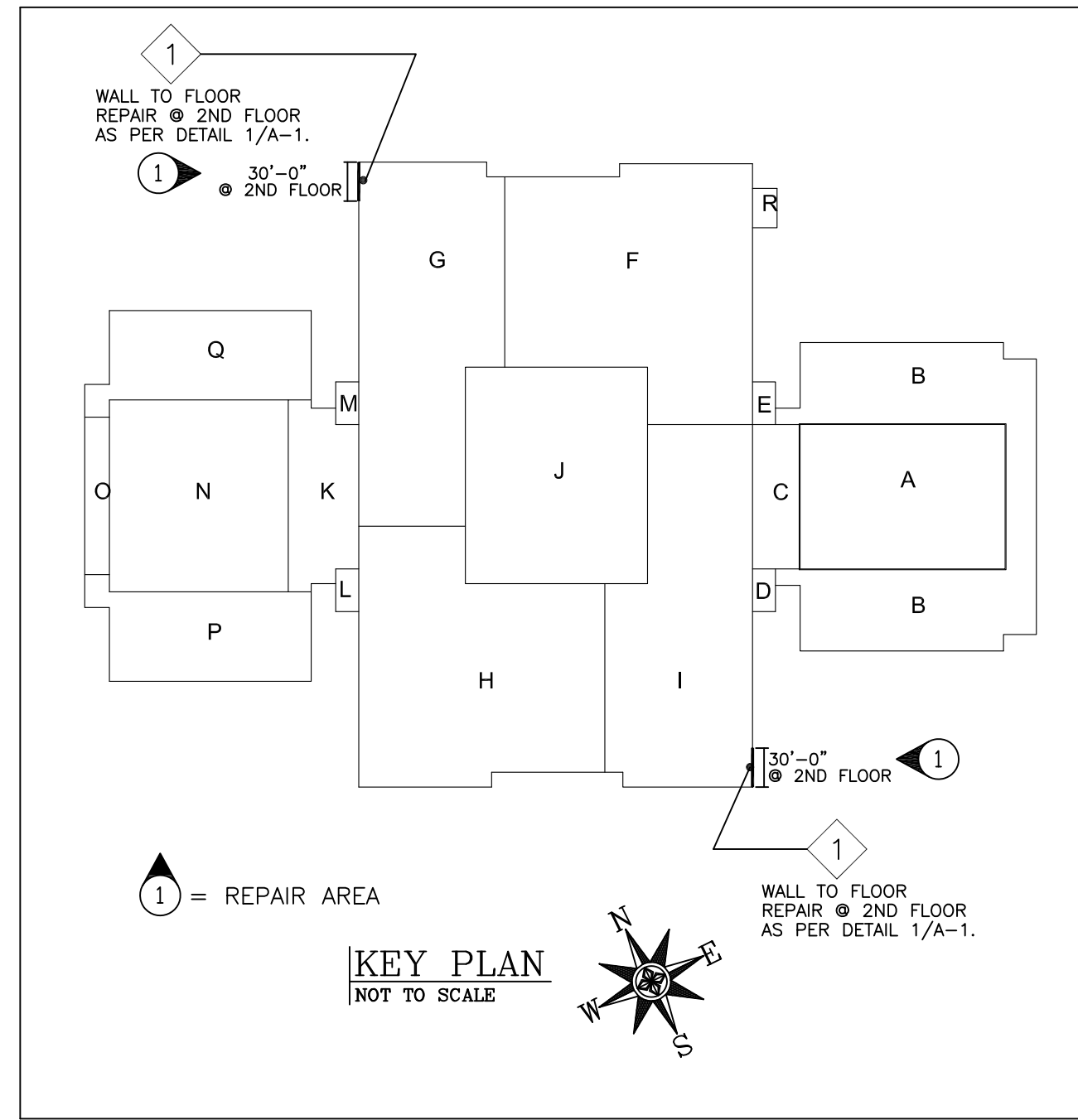
DRAWN BY CCC	DATE DRAWN 2/11/13	FILE NAME MAPLEPOINT1
APPROVED CC	SCALE NOT TO SCALE	DWG. SHEET T-1

WTI PROJECT NO.: P11-937-01
WTI ORDER NO.: 900000

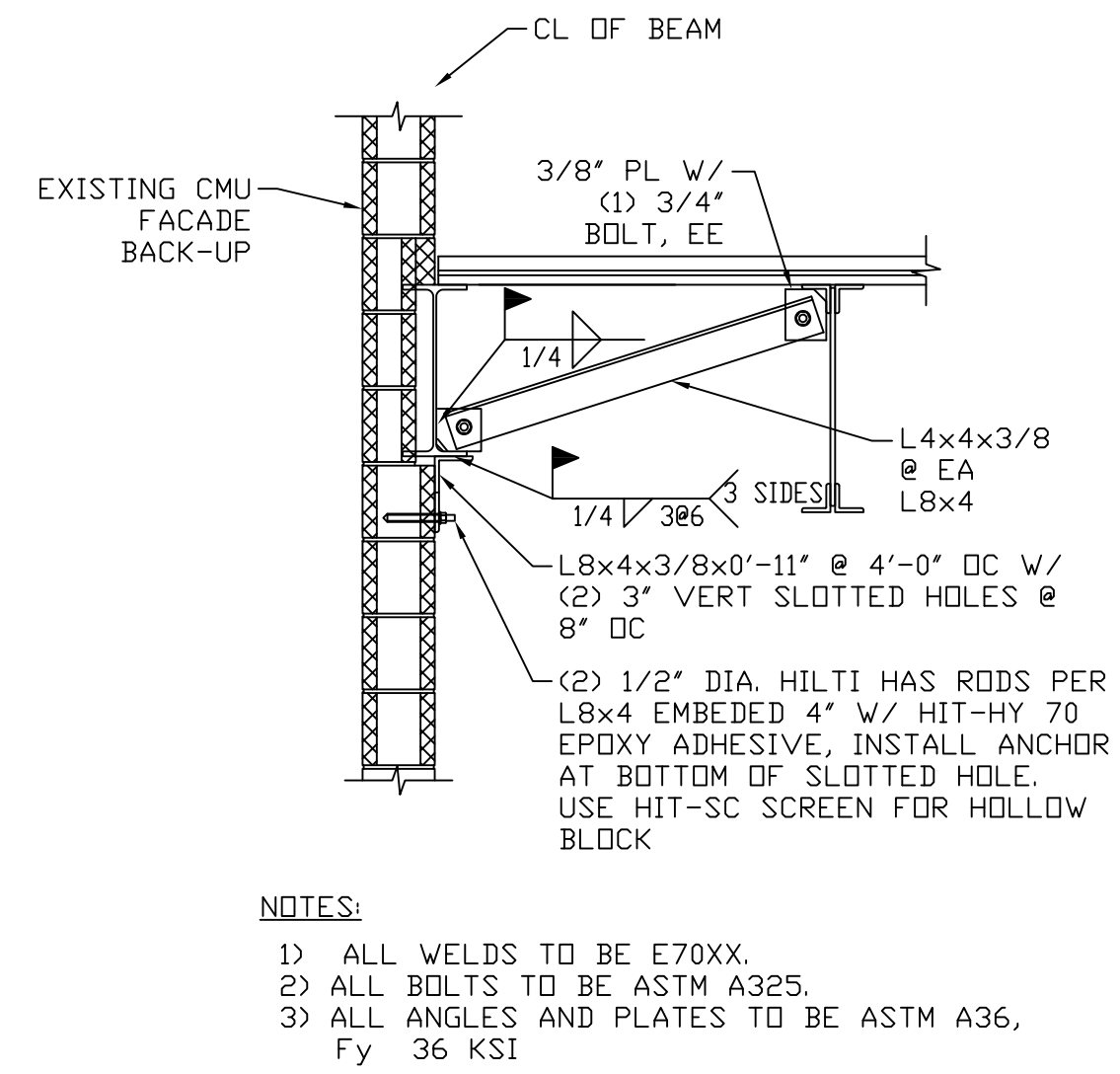
MASONRY RESTORATION PROJECT

MAPLE POINT MIDDLE SCHOOL
2250 LANGHORNE - YARDLEY ROAD
LANGHORNE, PA.

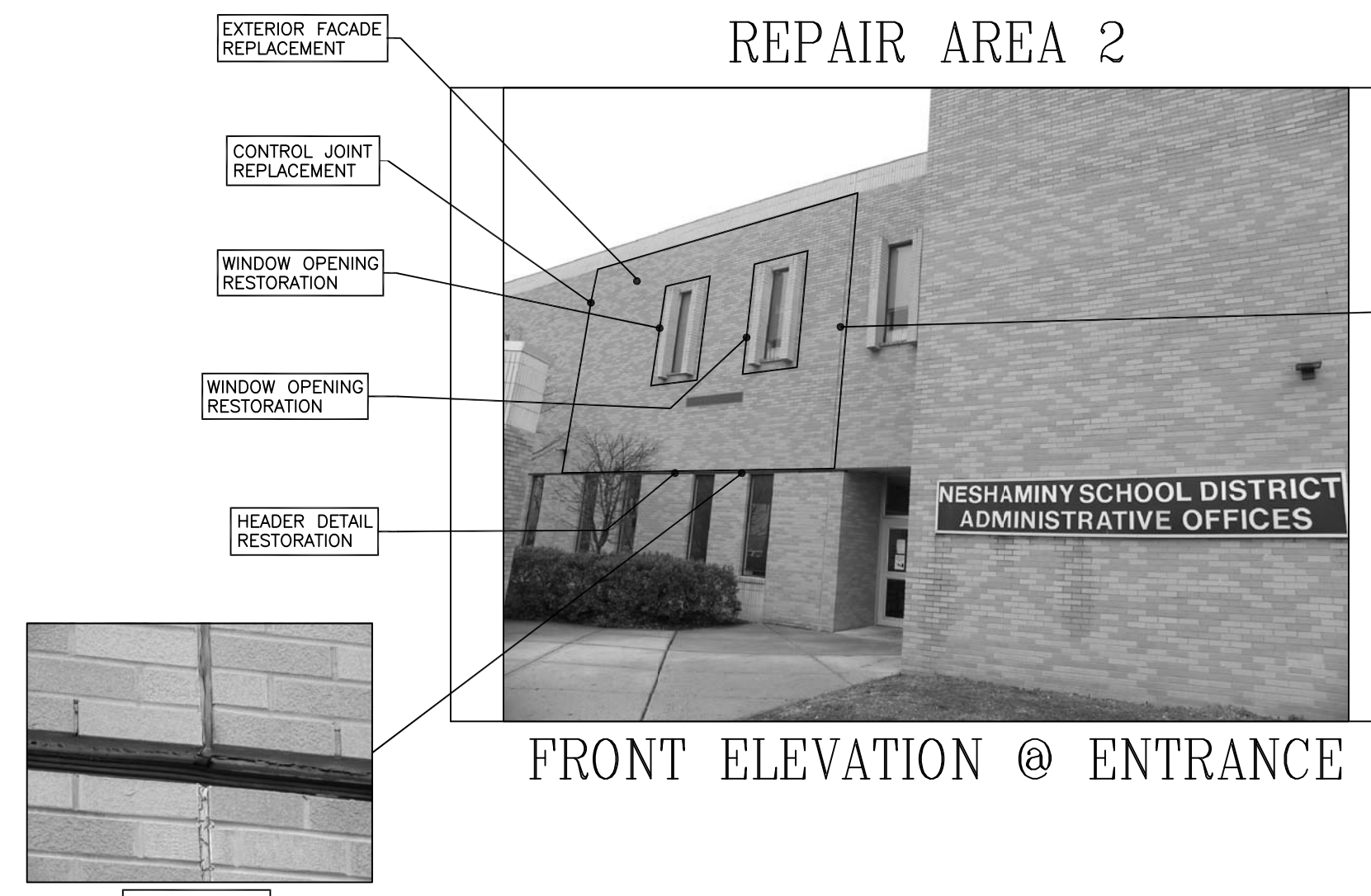
REPAIR AREA 1



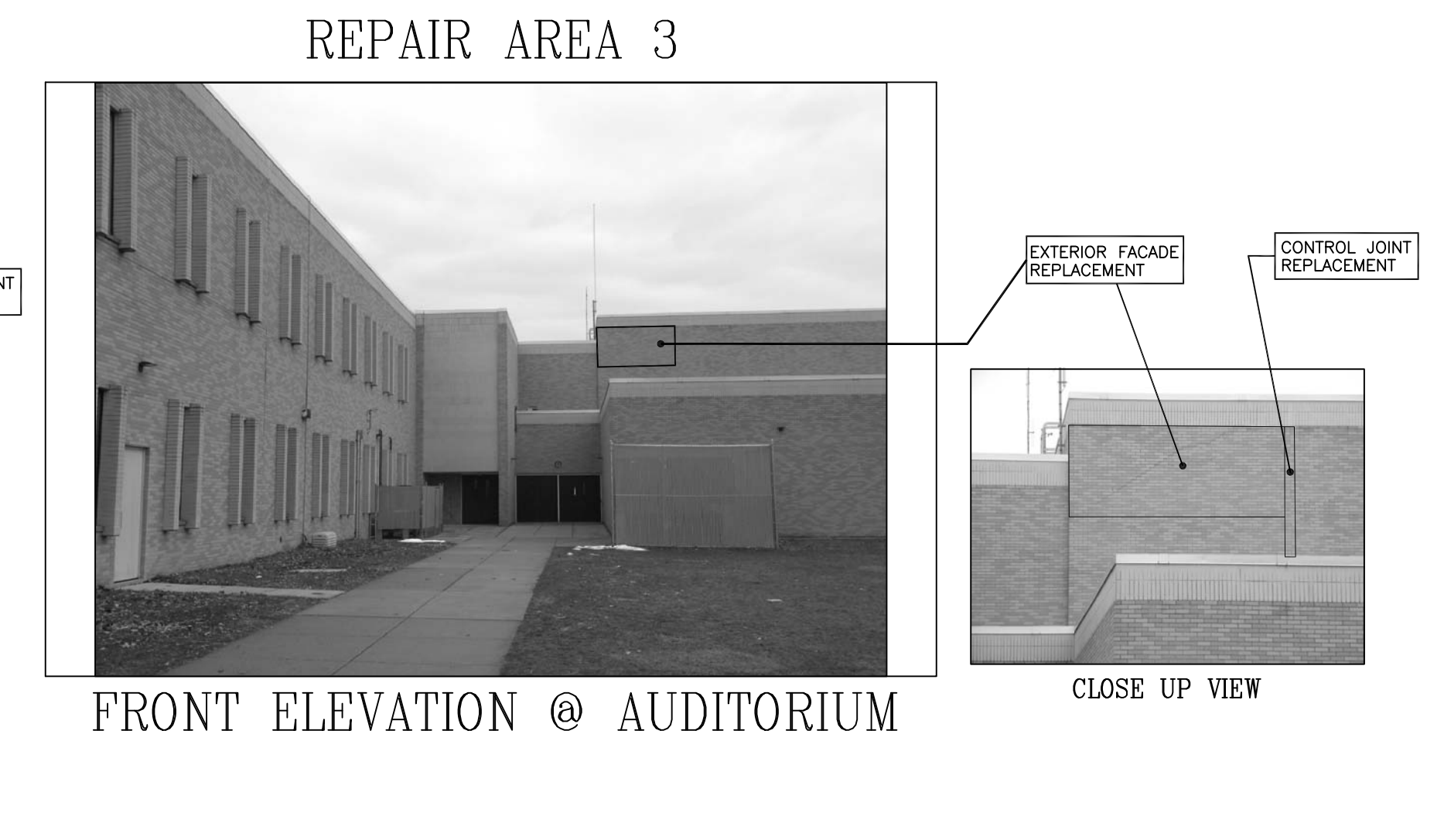
WALL TO FLOOR REPAIR @ 2ND FLOOR



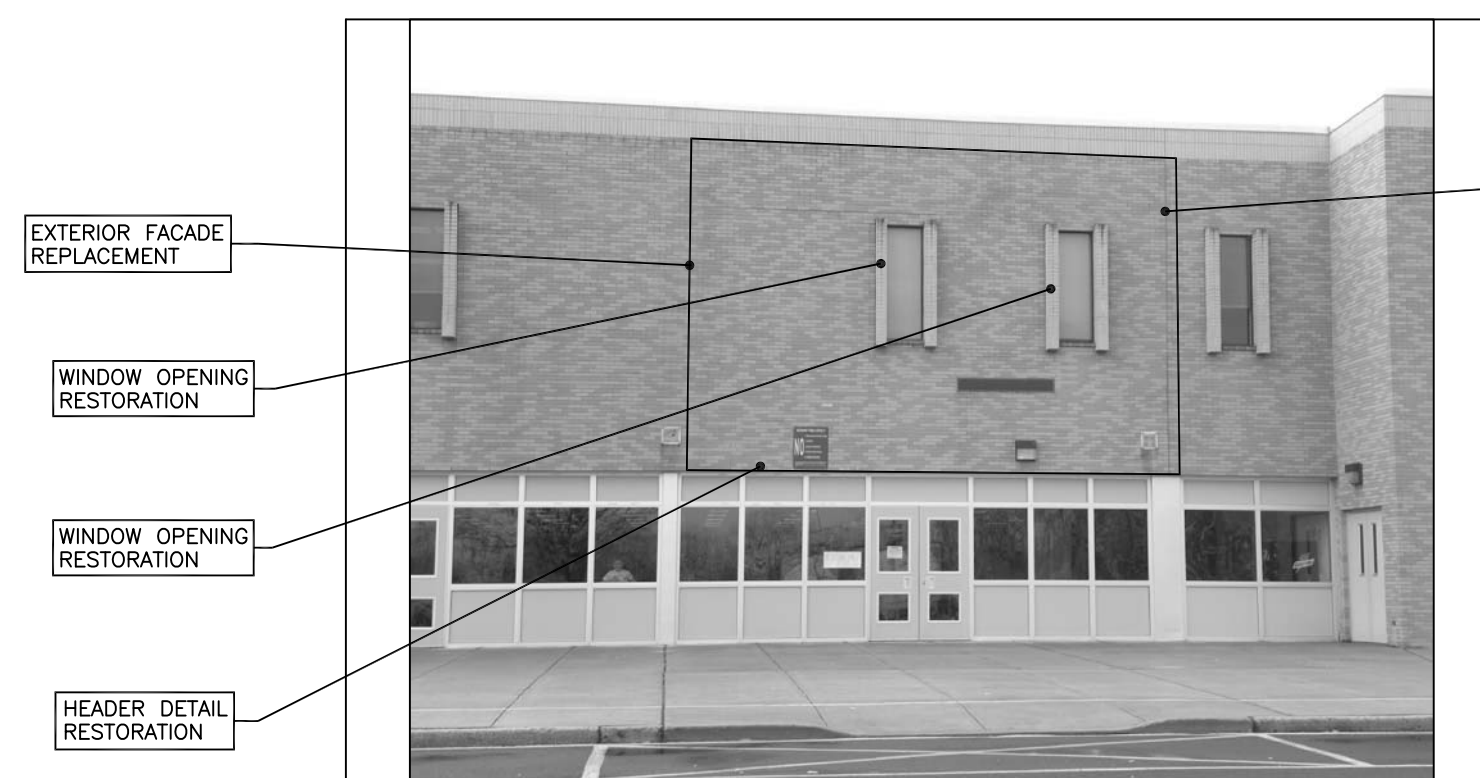
WALL TO FLOOR REPAIR DETAIL 1/A-1



HEADER DETAIL RESTORATION

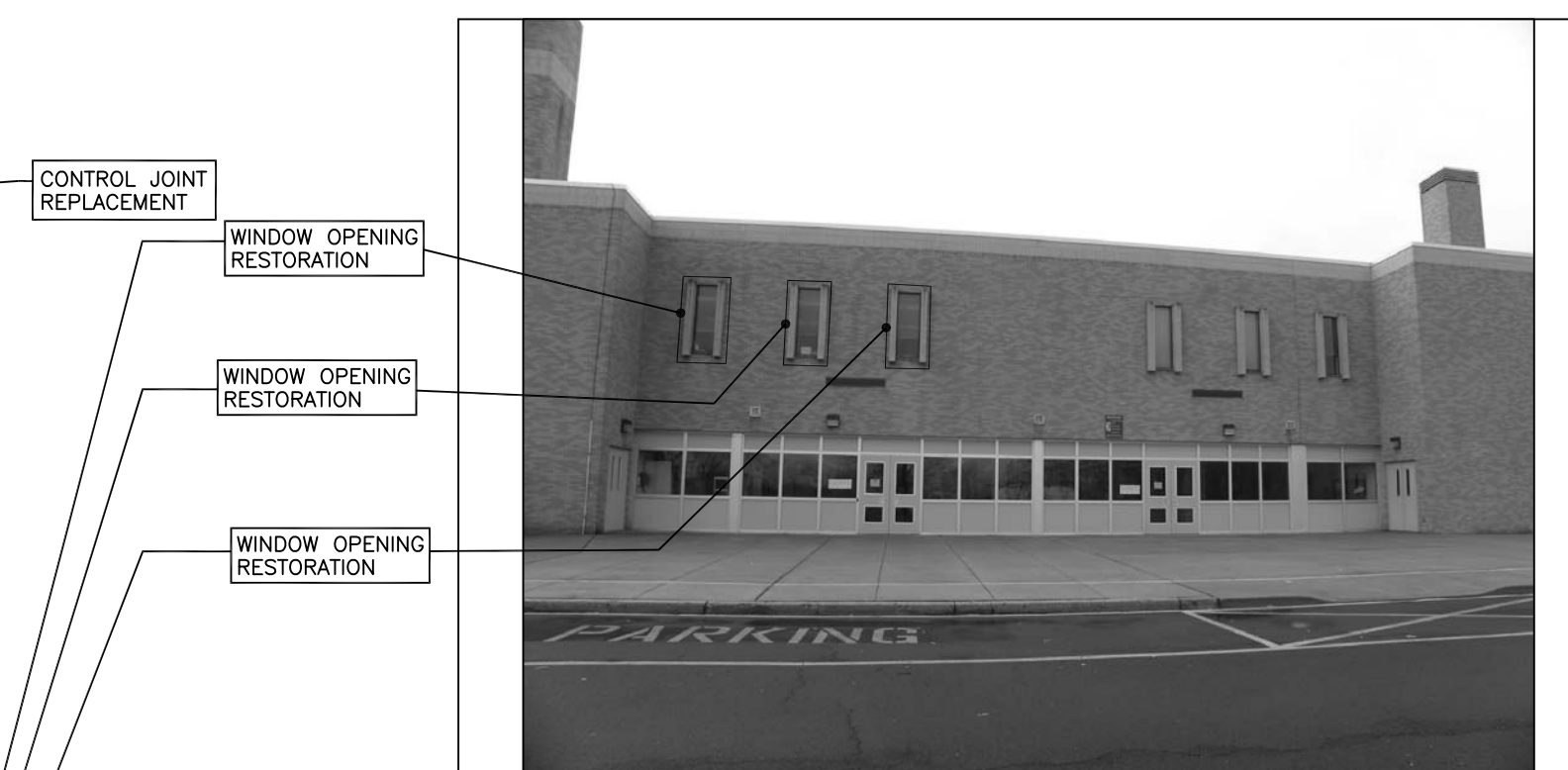


REPAIR AREA 4



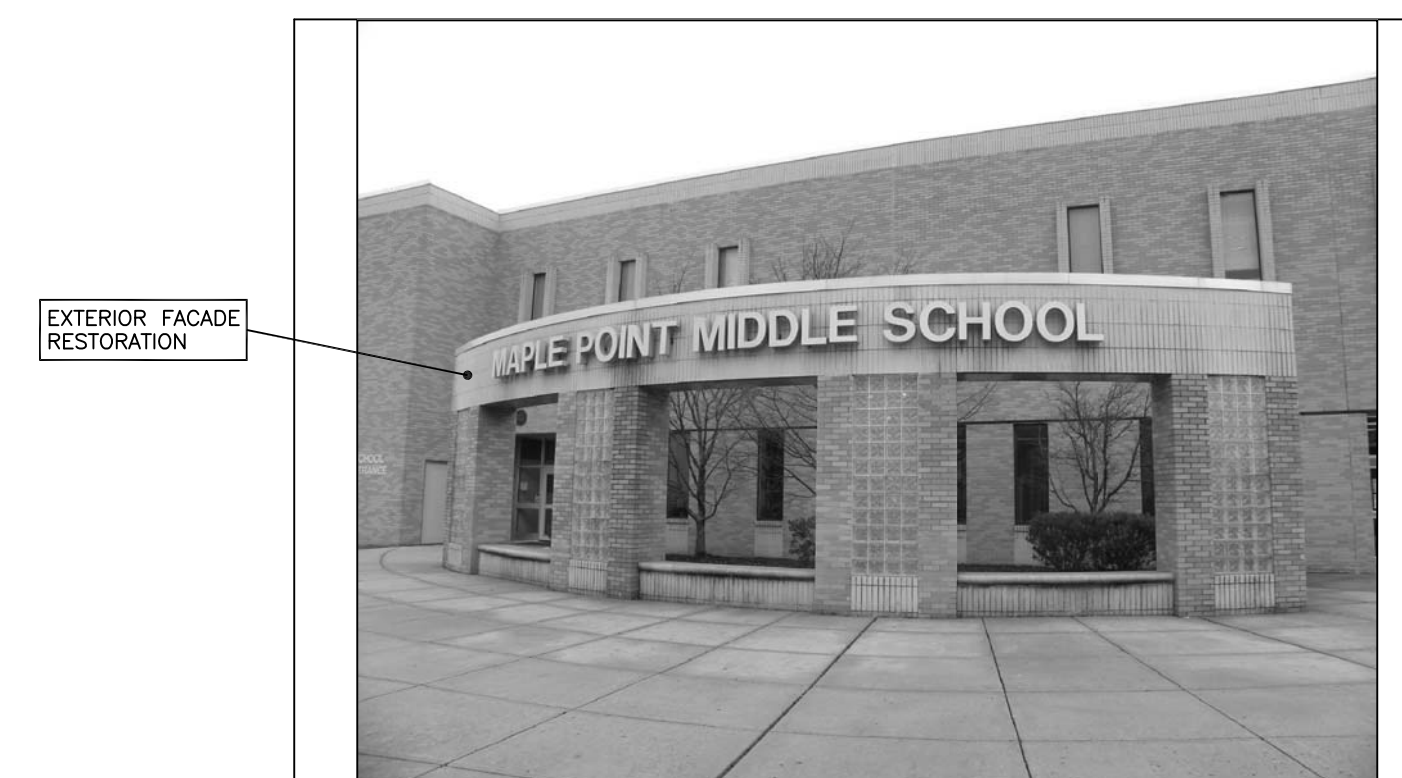
REAR ELEVATION @ CAFETERIA

REPAIR AREA 5



REAR ELEVATION @ CAFETERIA

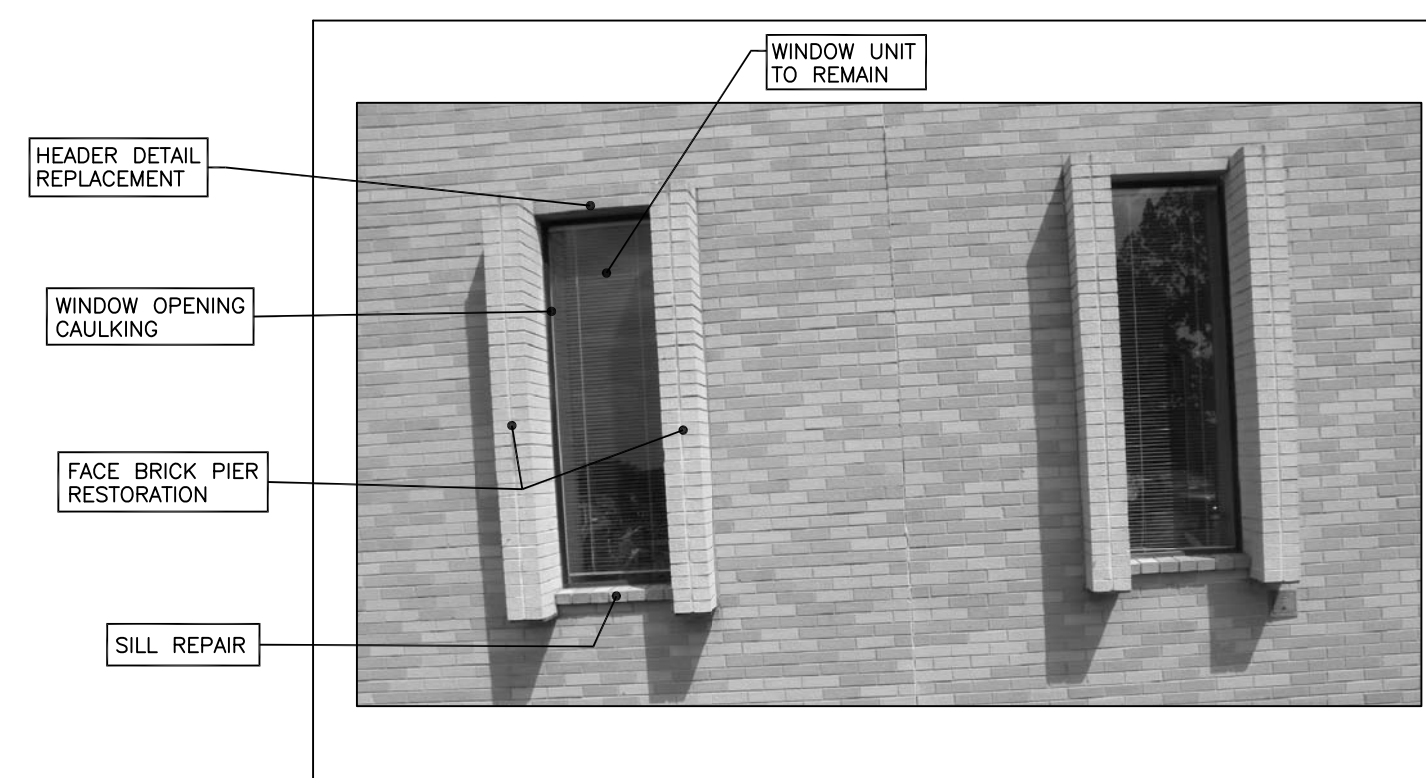
REPAIR AREA 6



REPAIR AREA 7



REPAIR AREA 5



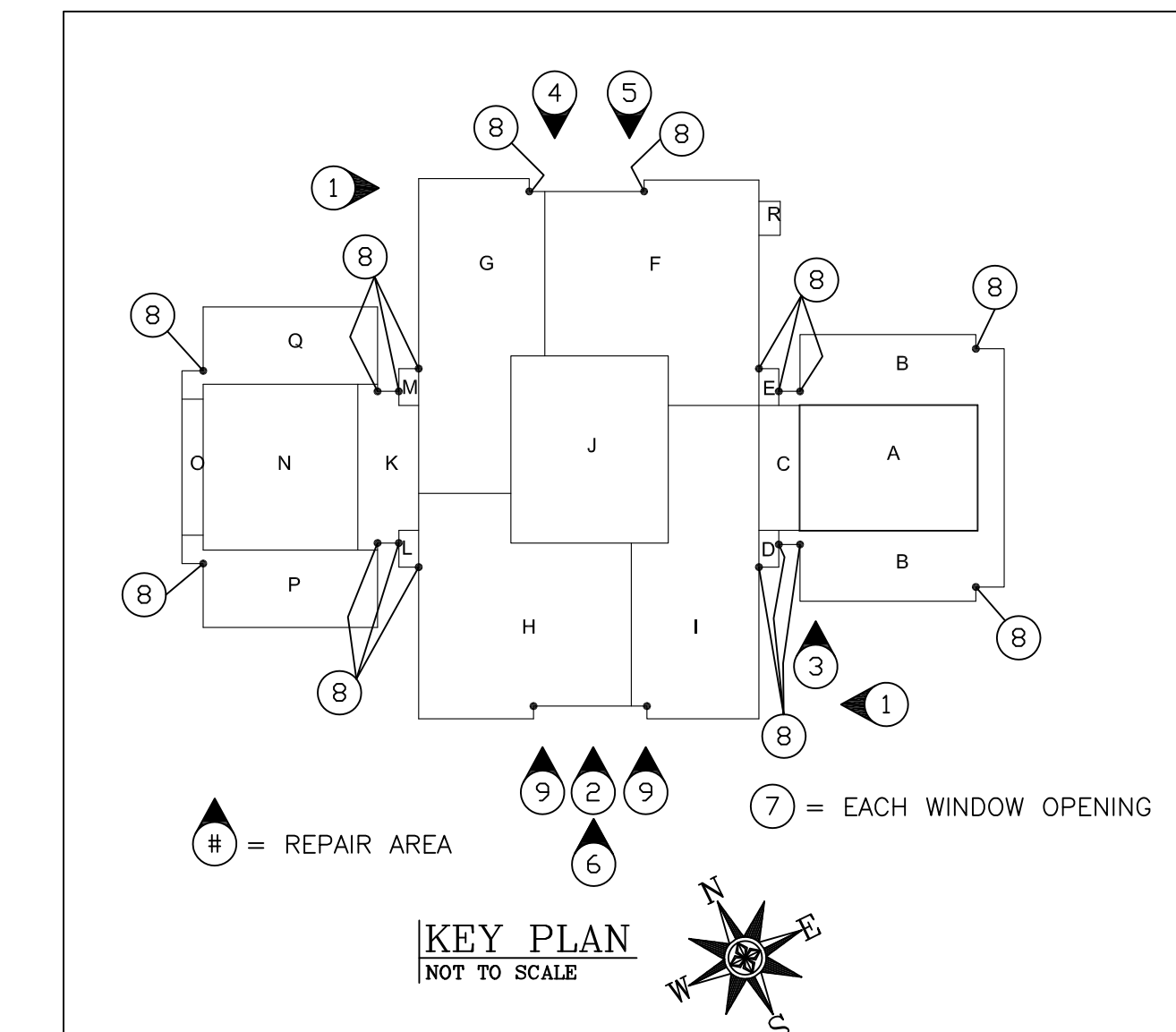
REPAIRS @ WINDOW OPENING

REPAIR AREA 8



REPAIR @ INSIDE CORNER VERTICAL JOINT DETAIL

REPAIR AREA 9

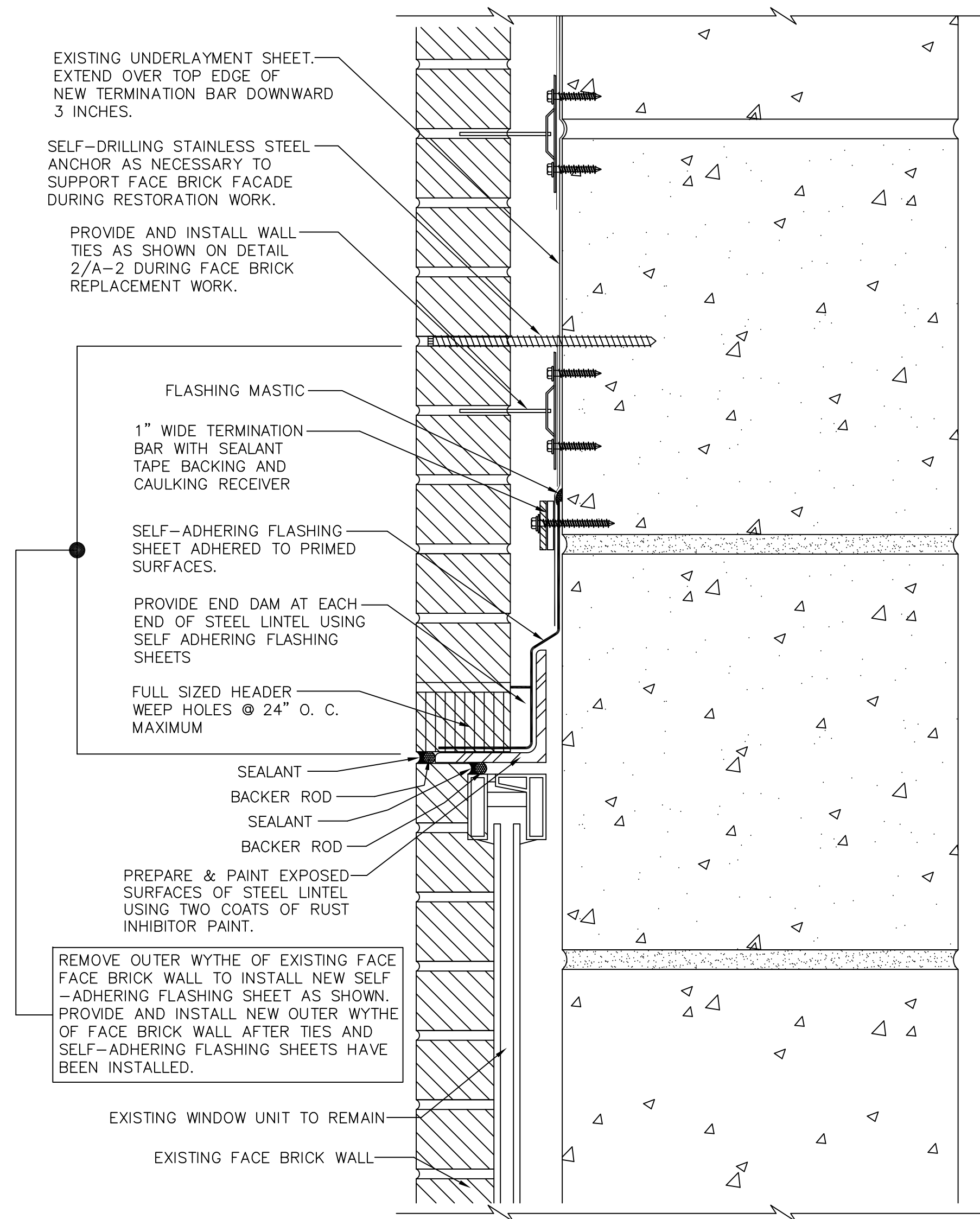


REVISIONS	NO.	DATE	BY

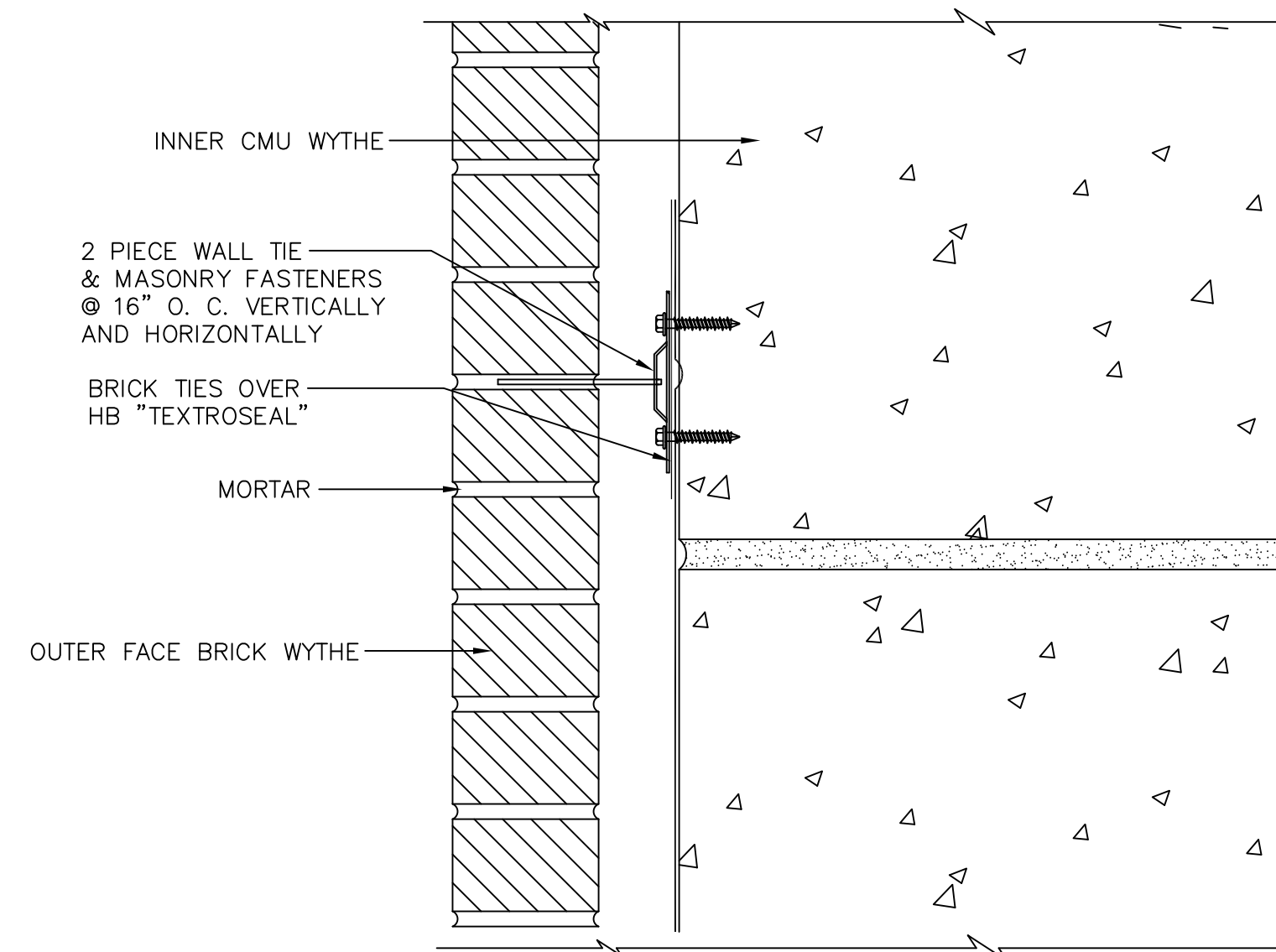
wti A Division of FPM Building Solutions		
3735 GREEN ROAD BEACHWOOD, OH 44122 TEL: 800-852-6013 WWW.WTISERVICES.COM		
CLIENT: NESHAMINY SCHOOL DISTRICT		
BUILDING: MAPLE POINT MIDDLE SCHOOL		
LOCATION: 2250 LANGHORNE-YARDLEY ROAD LANGHORNE, PA		
DRAWN BY CCC	DATE DRAWN 2/11/13	FILE NAME MAPLEPOINT1
APPROVED CC	SCALE NOT TO SCALE	DWG. SHEET A-1
WTI PROJECT NO.: P11-937-01		WTI ORDER NO.: 900000

MASONRY RESTORATION PROJECT

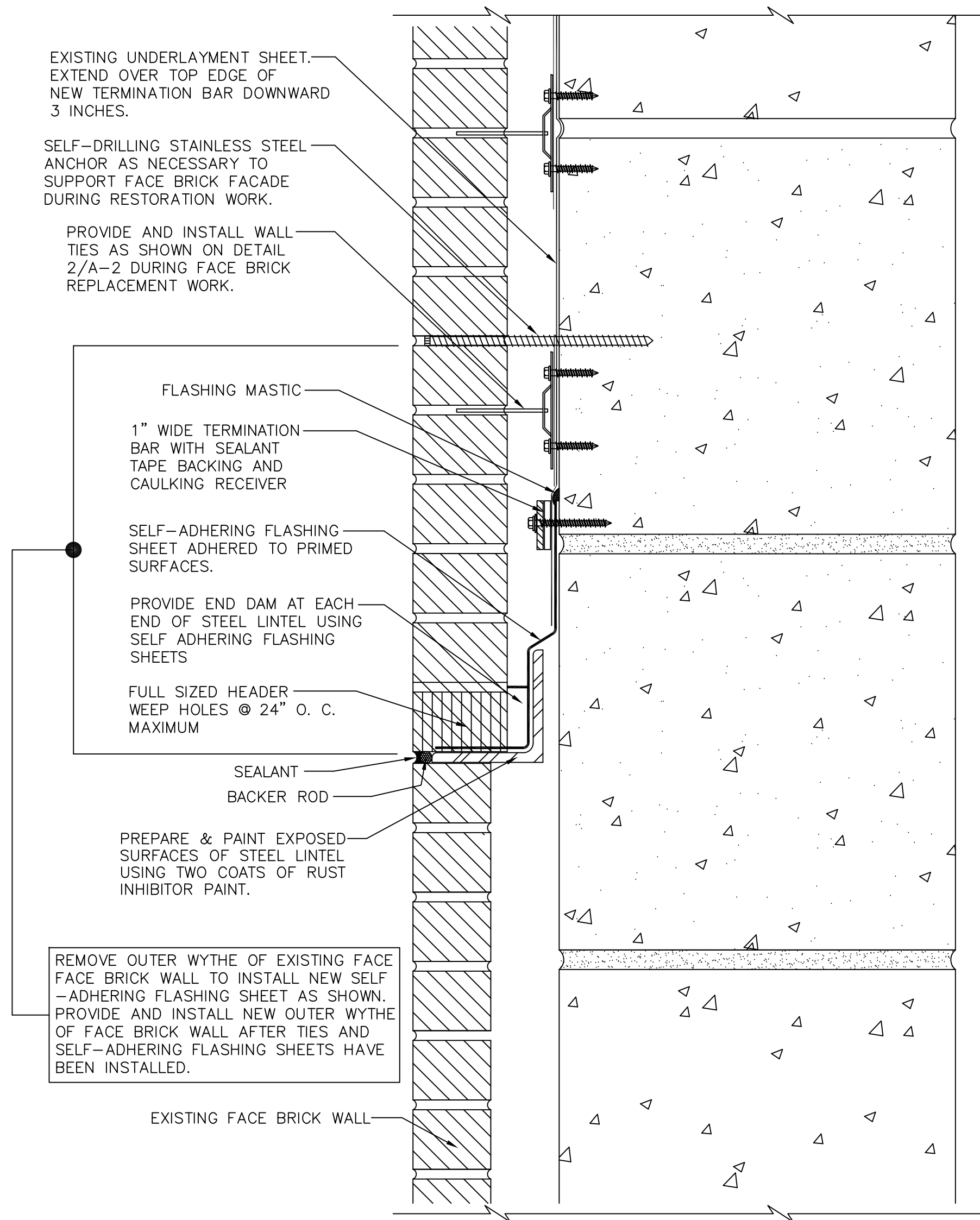
MAPLE POINT MIDDLE SCHOOL
2250 LANGHORNE - YARDLEY ROAD
LANGHORNE, PA.



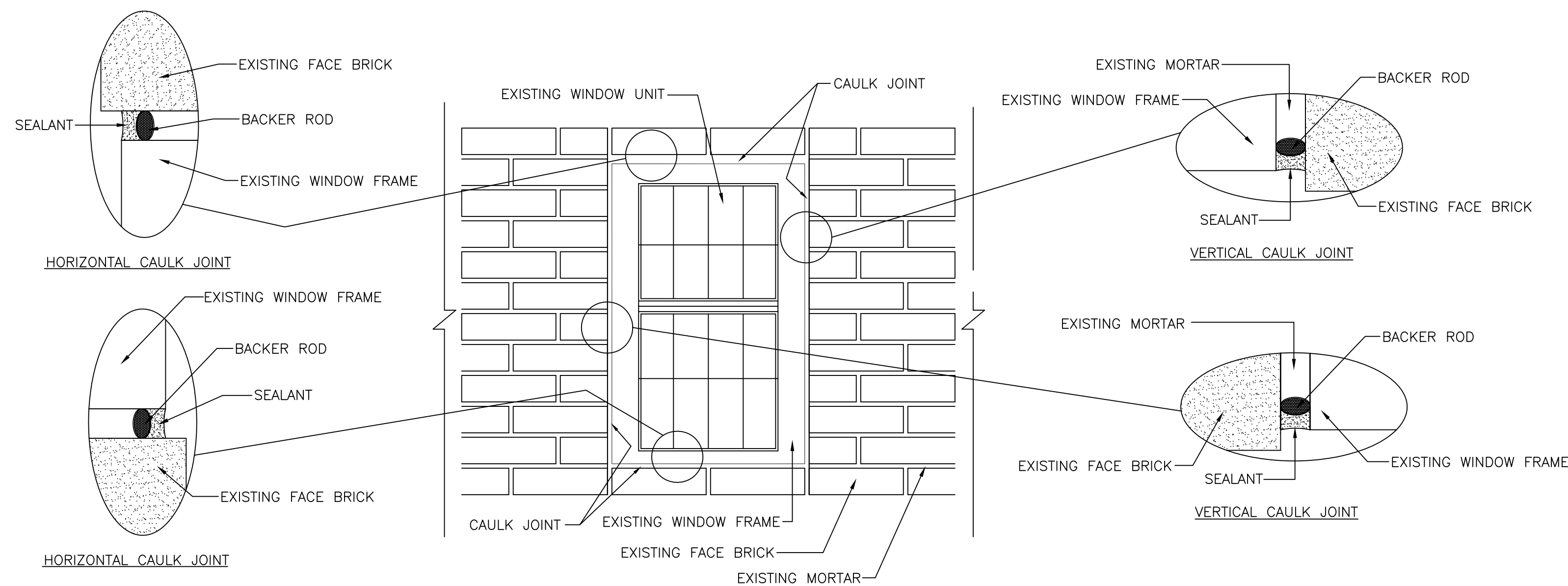
WINDOW OPENING HEADER DETAIL 1 A-2



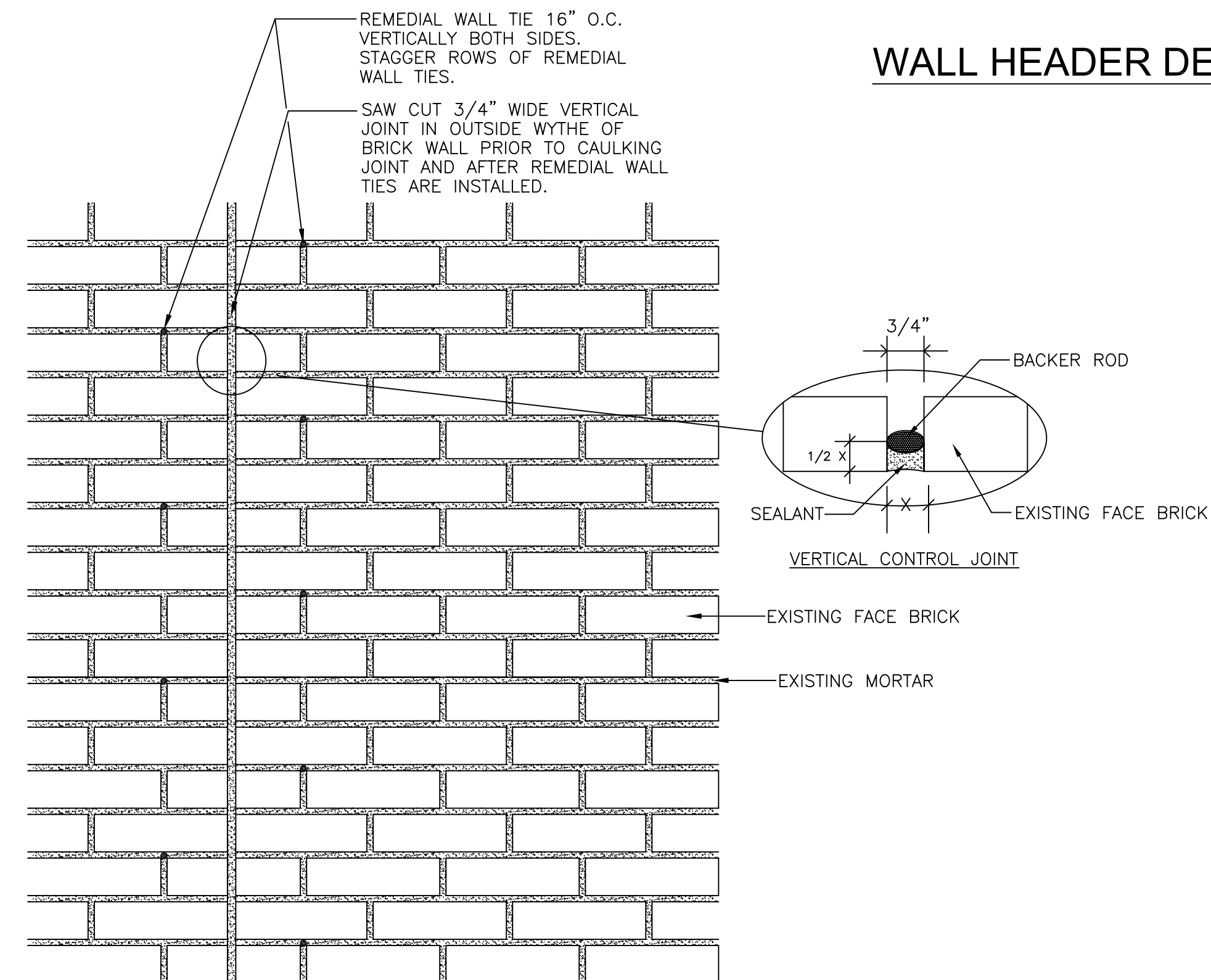
TYPICAL WALL TIE DETAIL 2 A-2



WALL HEADER DETAIL 3 A-2



WINDOW CAULKING DETAIL 4 A-2



VERTICAL CONTROL JOINT 5 A-2

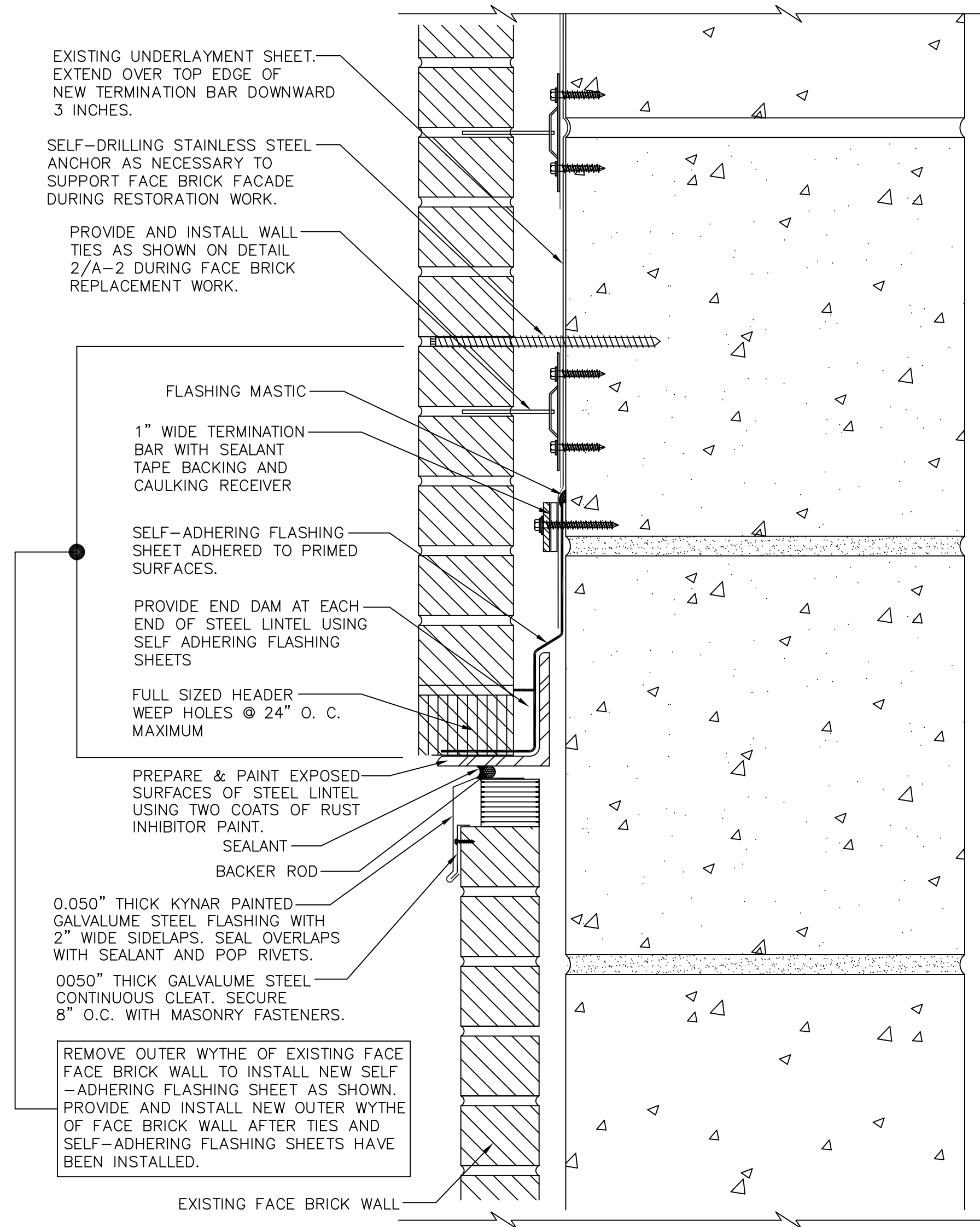
REVISIONS	NO.	DATE	BY

WEATHERPROOFING TECHNOLOGIES, INCORPORATED
Solutions Through Information & Management Expertise
An **PPM** Company

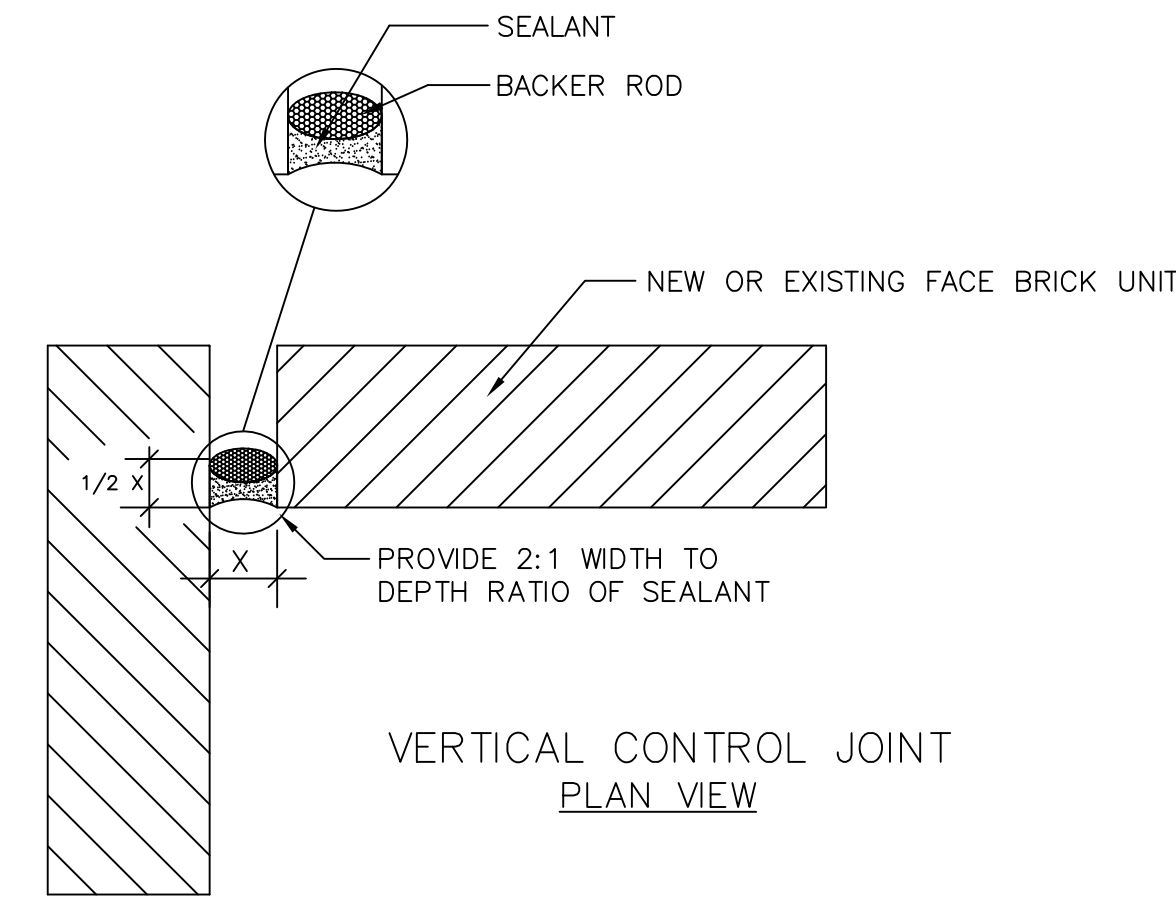
CLIENT: NESHAMINY SCHOOL DISTRICT			
BUILDING: MAPLE POINT MIDDLE SCHOOL			
LOCATION: 2250 LANGHORNE-YARDLEY ROAD LANGHORNE, PA			
DRAWN BY CCC	DATE DRAWN 2/11/13	FILE NAME MAPLEPOINT2	
APPROVED CC	SCALE NOT TO SCALE	DWG. SHEET	
WTI PROJECT NO.: P11-937-01			A-2
WTI ORDER NO.: 900000			

MASONRY RESTORATION PROJECT

MAPLE POINT MIDDLE SCHOOL
2250 LANGHORNE - YARDLEY ROAD
LANGHORNE, PA.




WALL HEADER DETAIL 6
@ EXPANSION JOINT A-3



INSIDE CORNER JOINT DETAIL 7
A-3

REVISIONS	NO.	DATE	BY



A Division of **FPM** Building Solutions

3735 GREEN ROAD BEACHWOOD, OH 44122
TEL: 800-852-6013 WWW.WTISERVICES.COM

CLIENT:
NESHAMINY SCHOOL DISTRICT

BUILDING:
MAPLE POINT MIDDLE SCHOOL

LOCATION:
2250 LANGHORNE-YARDLEY ROAD
LANGHORNE, PA

DRAWN BY CCC	DATE DRAWN 2/11/13	FILE NAME MAPLEPOINT3
APPROVED CC	SCALE NOT TO SCALE	DWG. SHEET A-3

WTI PROJECT NO.: P11-937-01
WTI ORDER NO.: 900000